

**Feature**

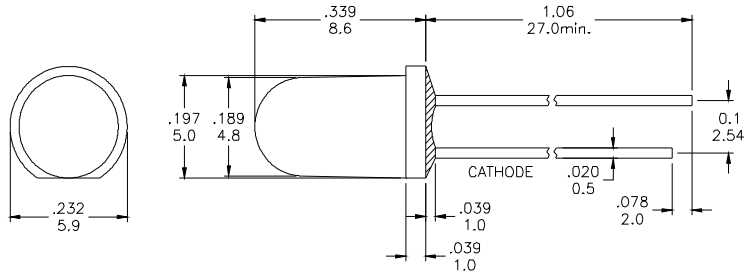
- § Low Power Consumption
- § High Intensity
- § I.C. compatible

**Applications**

- § Commercial Outdoor Sign Board
- § Front Panel Indicator
- § Dot-Matrix Module
- § LED Bulb

**Description**

- § These High Intensity LEDs are Based on AlGaInP/GaAs Material Technology
- § Water Transparent Lens

**Package Dimension**


\*Tolerance :  $\pm \frac{0.01}{0.25}$  Unit :  $\pm \frac{\text{inch}}{\text{mm}}$

**Absolute Maximum Ratings at Ta = 25°C**

Symbol	Parameter	Max.	Unit
PD	Power Dissipation	120	mW
VR	Reverse Voltage	5	V
IAF	Average Forward Current	30	mA
IPF	Peak Forward Current (Duty=0.1, 1kHz)	120	mA
—	Derating Linear Form 25°C	0.4	mA / °C
Topr	Operating Temperature Range	- 40 to + 80	°C
Tstg	Storage Temperature Range	- 40 to + 100	°C

Lead Soldering Temperature [1.6mm (0.063inch) From Body] 260°C For 5 Seconds.

**Electrical / Optical Characteristics and Curves at Ta = 25°C**

Symbol	Parameter	Test Condition	Min.	Typ.	Max.	Unit
VF	Forward Voltage	IF = 20 mA		2.2	2.6	V
IR	Reverse Current	VR = 5 V			100	μA
$\Delta\theta$	Half Intensity Angle	IF = 20 mA		30		Deg.
IV	Luminous Intensity	IF = 20 mA		6900	---	mcd.
$\lambda_p$	Peak Wavelength	IF = 20 mA		605		nm





**APEX OPTO  
CORP**

**SUPER BRIGHT LED LAMP**

**AOL-5GAMJ4**

**Electrical Characteristics at Ta = 25°C**

Symbol	I <sub>v</sub>		V <sub>F</sub>		λ D	
Parameter	Luminous Intensity		Forward Voltage		Dominant Wavelength	
Condition	IF=20mA		IF=20mA		IF=20mA	
Unit	mcd		V		nm	
Binning	Grade	Range	Grade	Range	Grade	Range
	BIN 21	4900~6900	E	2.1~2.2	A2	600~604
	BIN 22	6900~9700	F	2.2~2.3	A3	604~608
			G	2.3~2.4	A4	608~612
			H	2.4~2.5		

Intensity: Tolerance of minimum and maximum = ± 15%

V<sub>f</sub>: Tolerance of minimum and maximum = ± 0.05v

NOTE:

1. Static electricity and surge damages the LED. It is recommend to use a anti-static wrist band or anti-electrostatic glove when handing the LEDs. All devices, equipment and machinery must be properly grounded.



**APEX OPTO  
CORP**

**SUPER BRIGHT LED LAMP**

**AOL-5GAMJ4**

**.Radiation Diagram**

**IF=20 mA    50% Power Angle    Angle =30°**

