

Feature

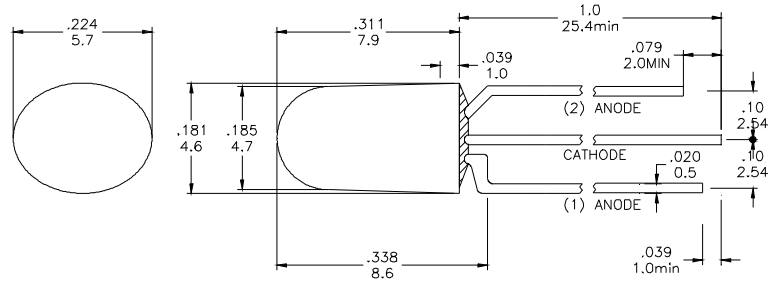
- § Low Power Consumption
- § Bi-color LED Lamp
- § High Intensity
- § I.C. compatible

Applications

- § Commercial Outdoor Sign Board
- § Bi-color Indicator Lamp
- § Front Panel Indicator
- § Backlight

Description

- § The (1)Red and (2)Blue Chips are Matched For uniform Light Output
- § Water Transparent Lens

Package Dimension


*Tolerance : $\pm \frac{0.01}{0.25}$ Unit : $\pm \frac{\text{inch}}{\text{mm}}$

Absolute Maximum Ratings at Ta = 25°C

Symbol	Parameter	Max.	Unit
PD	Power Dissipation	100	mW
VR	Reverse Voltage	5	V
IAF	Average Forward Current	30	mA
IPF	Peak Forward Current (Duty=0.1, 1kHz)	100	mA
—	Derating Linear Form 25°C	0.4	mA / °C
Topr	Operating Temperature Range	- 40 to + 80	°C
Tstg	Storage Temperature Range	- 40 to + 100	°C
Lead Soldering Temperature [1.6mm (0.063inch) From Body] 260°C For 5 Seconds.			

Electrical / Optical Characteristics and Curves at Ta = 25°C

Symbol	Parameter	Test Condition	Min.	Typ.	Max.	Unit
VF	Forward Voltage	IF= 20 mA	R	2.0	2.3	V
			B	3.5	4.0	
IR	Reverse Current	VR= 5 V			100	μA
IV	Luminous Intensity	IF= 20 mA	R	2500		mcd.
			B	1800		
λd	Dominant Wavelength	IF= 20 mA	R	625		nm
			B	465		

Feature

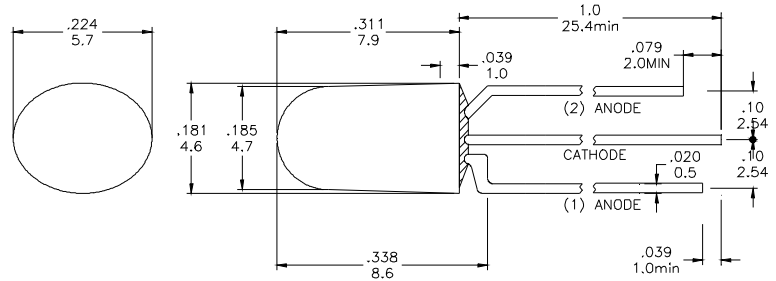
- § Low Power Consumption
- § Bi-color LED Lamp
- § High Intensity
- § I.C. compatible

Applications

- § Commercial Outdoor Sign Board
- § Bi-color Indicator Lamp
- § Front Panel Indicator
- § Backlight

Description

- § The (1)Red and (2)Blue Chips are Matched For uniform Light Output
- § Water Transparent Lens

Package Dimension


*Tolerance : $\pm \frac{0.01}{0.25}$ Unit : $\pm \frac{\text{inch}}{\text{mm}}$

Absolute Maximum Ratings at Ta = 25°C

Symbol	Parameter	Max.	Unit
PD	Power Dissipation	100	mW
VR	Reverse Voltage	5	V
IAF	Average Forward Current	30	mA
IPF	Peak Forward Current (Duty=0.1, 1kHz)	100	mA
—	Derating Linear Form 25°C	0.4	mA / °C
Topr	Operating Temperature Range	- 40 to + 80	°C
Tstg	Storage Temperature Range	- 40 to + 100	°C

Lead Soldering Temperature [1.6mm (0.063inch) From Body] 260°C For 5 Seconds.

Electrical / Optical Characteristics and Curves at Ta = 25°C

Symbol	Parameter	Test Condition	Min.	Typ.	Max.	Unit	
VF	Forward Voltage	IF= 20 mA	R		2.0	2.3	V
			B		3.5	4.0	
IR	Reverse Current	VR= 5 V			100	μA	
IV	Luminous Intensity	IF= 20 mA	R		2500		mcd.
			B		1800		
λ d	Dominant Wavelength	IF= 20 mA	R		625		nm
			B		465		